

Mac OS 9 Wireless

1. Under the **Apple menu**, go to **Control Panels**. Select **TCP/IP**.
2. Under the **File** menu in **TCP/IP**, select **Configurations**. A box like the one shown in Fig. A should come up.

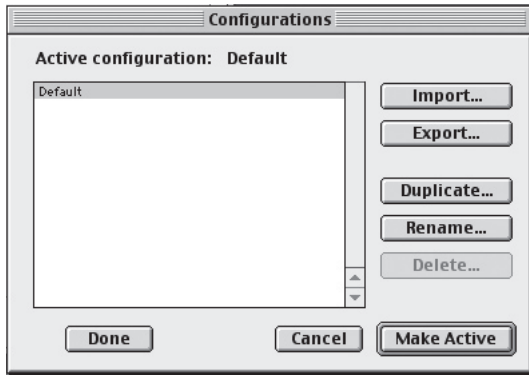


Fig. A

3. Select **Default** from the list, and click on **Duplicate...** Name the new configuration "Lewis and Clark" or some other easily identifiable name, and click **OK**. Click on **Make Active**.
4. In the **TCP/IP** window, select **Airport** from the **Connect via:** pull-down menu. Under **Setup**, the **Configure:** setting should be set to **Using DHCP Server**, as shown below in Fig. B. Quit TCP/IP.

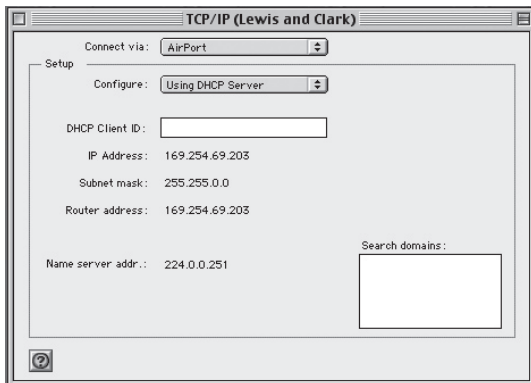


Fig. B

5. From the **Apple menu**, select **Airport**.
6. Under **Settings** section, first make sure that the Airport is on. (If you do not see a Settings section like shown below in Fig. C, click on the small triangle next to Settings to open the full panel.) Check the box next to **Allow selection of closed networks**.

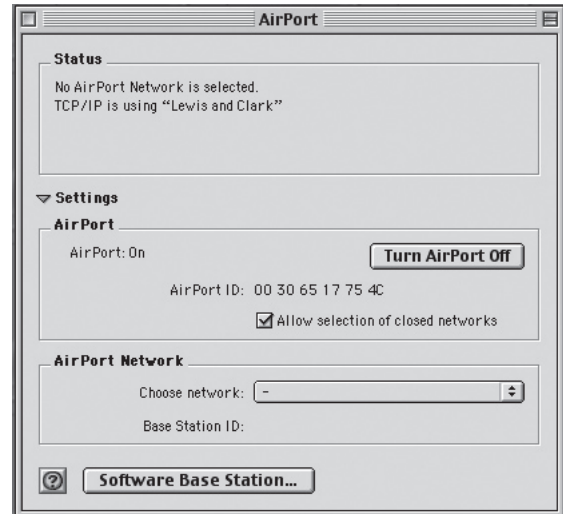


Fig. C

7. Under **Airport Network** section, select **Other** from the **Choose Network** pull-down menu. Under **Name:** enter the channel name obtained from the lab assistant and click **OK**.
8. You should now see signal level in the **Status** section, indicating a connection to the network.