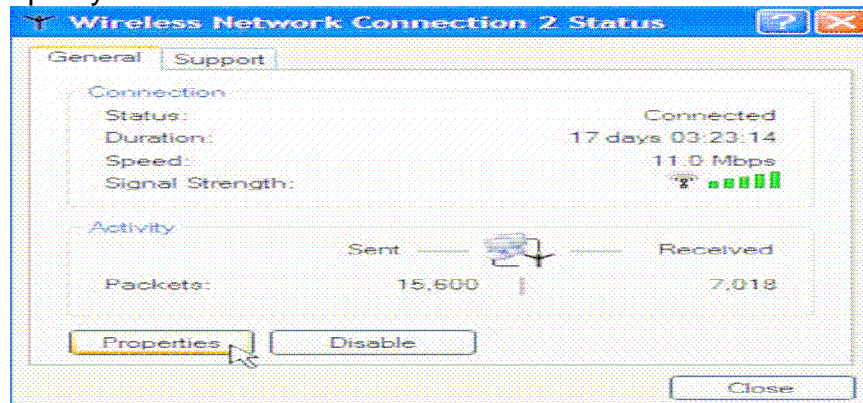


Configuring LC Wireless

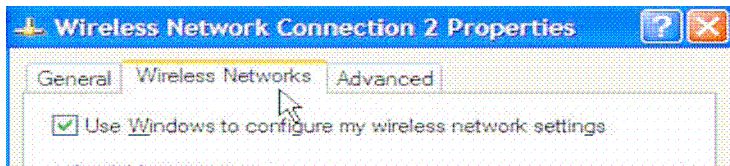
This help sheet assumes you have successfully installed your wireless network card. The process for this will depend on your operating system and the manufacturer of your wireless card. Windows XP, Windows 2K are plug and play. The cards should automatically be detected and configured when installed. For other operating systems, refer to Help Sheet "Configuring External Wireless Cards"

Once the wireless card is installed, there is an extra step. Since our network doesn't broadcast its signal you have to tell the wireless network card where to find the wireless network. To do so:

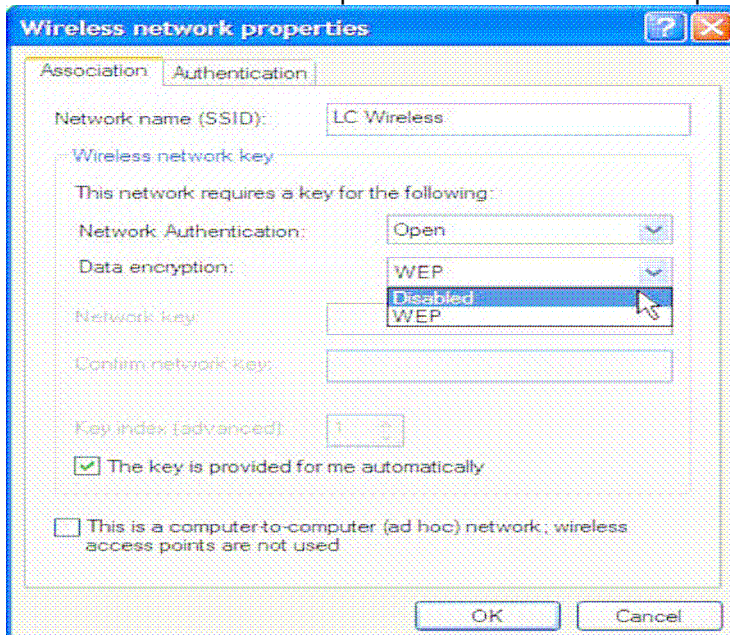
1. Go to the Control Panels, to Network Connection and double click to open your Wireless Network Connection



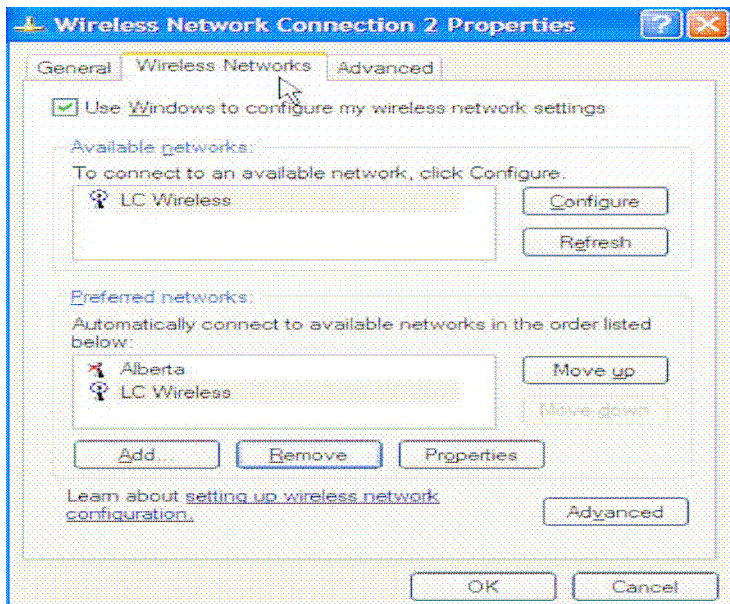
2. Click on **Properties**
3. Click on the **Wireless Networks** tab



4. Click on **Add** to open the Wireless Network Properties dialog box



5. For the Network Name (SSID), enter **LC Wireless**. This is case-sensitive.
6. Data encryption *must be* disabled. If WEP data encryption is active, you will not be able to connect to LC Wireless.
8. Click **OK** to return to the Wireless Properties dialog box.



9. Click **OK** to save your changes.
10. You should soon see a notification in your System Tray that you are connected to the LC Wireless network. If you are not notified, return to your wireless properties (Fig. 4) and click on the refresh button until LC Wireless appears on the list of available networks. If you cannot connect to the LC Wireless network, see the Troubleshooting section of this document.
11. Once you are connected to LC Wireless, launch your web browser to login so you can use the Internet and network services. See Authentication later in this handout for step-by-step instructions